

Cork Packing

	Thickness	Width	Form
6000.01	1/32"	28" x 50"	Sheet
6000.02	1/16"	36"	Roll
6000.03	3/32"	36"	Roll
6000.04	1/8"	36"	Roll

Ribbon Cork

Available in 100' rolls only.

	Width	Thickness
6010.01	7/8"	1/16"
6010.02	1"	1/16"
6010.03	1-1/4"	1/16"
6010.04	1-1/2"	1/16"
6010.05	1-7/8"	1/16"

**Felt**

Provide sample and intended use if unsure of selection.

	Thickness	Width	Color	Application
6100.01	1/8"	72"	Gray	Shutters, bumpers, muffler boxes
6100.02	1/4"	72"	Gray	Shutters, bumpers, muffler boxes
6100.03	3/8"	72"	Gray	Shutters, bumpers, muffler boxes
6101.01	3/64"	18"	White, wool	Valves, pallets, mothproofed
6101.02	3/32"	72"	White, wool	Valves, pallets, mothproofed
6101.03	9/64"	72"	White, wool	Valves, pallets, mothproofed
6101.04	3/16"	72"	White, wool	Valves, pallets, mothproofed
6101.05	1/4"	72"	White, wool	Valves, pallets, mothproofed
6102.01	1/16"	76"	Red, wool	Pipe caps, valves
6102.02	1/16"	72"	Blue, wool	Pipe caps, valves
6102.03	1/16"	76"	Green, wool	Pipe caps, valves
6102.04	1/16"	66"	Black, wool	Pipe caps, valves
6103.01	3/64"	74"	Red, wool/rayon	General purposes
6103.02	3/64"	55"	Red, woven	General purposes
6103.03	3/64"	54"	Red, bushing	Bushings
6103.04	1/32"	65"	Green, billiard	Bushings

Polyester Felt

A white manufactured fiber, uniform in thickness, mothproof and resistant to mildew.

	Thickness	Width
6106.01	3/64"	54"
6106.02	5/64"	72"
6106.03	3/32"	72"
6106.04	5/32"	72"

Hammer Rail Felt

Used under the front of manual keyboards. When holes are provided, they are in the center of the strip. The pedal felt is used as an up and down stop at the front of pedal keys.

	Description	Size	Color
6110.00	Manual hammer rail	1/4" x 7/8" x 33-1/2"	Dark green
6110.11	Manual hammer rail, w/holes	3/16" x 7/8" x 33-1/2"	Dark green
6110.01	Manual hammer rail, w/holes	1/4" x 7/8" x 33-1/2"	Dark green
6111.00	Pedal hammer rail	1/2" x 1-1/2" x 54"	Gray

Cut Felt

	Size	Color	Use
6115.01	1/8" x 3/4" x 30'	Gray	Clamps, etc.
6115.02	1/4" x 1" x 30'	Gray	Shutters

Felt Strip

Adhesive-backed felt strip useful for racking pipes, decorative console trim, etc. Brown, 100' rolls.

Size

6116.01	1/16" x 1/2"
6116.02	1/16" x 7/8"
6117.01	1/8" x 1/2"
6117.02	1/8" x 7/8"

Twill Tape

Woven tape for racking pipes, pneumatic hinges, reservoir folds, curtain valves, and reed organ straps.

	Thickness	Dimensions	Color
6120.01	Thin	5/8" x 72 yds.	Natural
6120.02	Medium	1" x 72 yds.	Natural
6120.03	Heavy	1" x 100 yds.	Natural
6120.04	Heavy	2" x specified length	Green
6120.06	Medium	3/4" x 100 yds	Natural
6120.07	Medium	3/8" x 250 yds	Natural



Felt Punchings

Available in packages of 100 or 1000.

	O.D.	I.D.	Thickness	Material
6130.11	3/64"	9/64"	17/32"	Red, Woven Cloth
6130.12	3/8"	1/16"	1/32"	Green Billiard Cloth
6130.01	3/8"	1/16"	3/64"	Red, Woven Cloth
6130.02	3/8"	1/16"	3/64"	Red Bushing Cloth (white center)
6130.03	3/8"	1/16"	1/16"	Red, Felt
6130.04	3/8"	1/32"	1/8"	Red, Felt
6130.05	7/16"	3/64"	3/32"	White, Felt
6130.06	1/2"	3/32"	3/64"	Balance Rail, Woven
6130.07	1/2"	3/32"	3/32"	Balance Rail, Woven
6130.08	3/4"	5/32"	7/32"	Green Front Rail, Woven
6130.09	3/4"	13/32"	3/16"	Gray Spring Guide
6130.10	5/16"	1/16"	1/32"	Green Billiard Cloth

LEATHER

Leather is sold by the full skin, priced by the square foot. All skins are marked to indicate nearest quarter square foot: $5^1 = 5.25$ sq. ft., $5^2 = 5.5$ sq. ft., etc. Leather thickness is measured by a weighted gauge, a dial caliper designed to exert a fixed pressure per square unit while measuring thickness. Color, thickness and skin sizes listed may vary from descriptions. A Leather Sample Card is available. If further assistance selecting proper leather is required, provide sample or description of where and how it is to be used. Custom cut leather pieces available.

6200.99 Leather Sample Card

Pneumatic Leather

Fine grained tan Havana (brown leather) used for pouches, diaphragms and small pneumatics. Sheepskin. Available in 4 weights, 4 to 7 sq. ft. per hide.

	Weight	Thickness
6200.01	Extra thin	.010" - .014"
6200.02	Thin	.014" - .018"
6200.03	Medium	.018" - .024"
6200.04	Heavy	.024" - .032"

Chrome Hairsheep Leather

Chrome tanned hairsheep pneumatic leather, referred to as "CPL", is the most sought after leather for covering and releathering of organ pouches. This pearl-colored leather is ideal for pouches, diaphragms, and small pneumatics. Sheepskin. Available in 3 weights, 4 to 7 sq. ft. per hide.

	Weight	Thickness
6202.02	Medium	.018" - .023"
6202.03	Heavy	.022" - .026"
6202.04	Extra Heavy	.035" - .044"

Kangaroo Pneumatic

6203.02 Fine thin pearl leather used for pouches, diaphragms and small pneumatics. Subject to available supply. 3 to 5 sq. ft. per hide. Thickness .012" - .019".

Cabretta

High quality leather for medium pneumatics, and small stoppers. Sheepskin.

	Weight	Average Thickness	Sq. Ft.
6210.01	1 oz.	.020" - .025"	3 - 5
6210.02	2, 2-1/2 oz.	.035" - .040"	5 - 9

Nappa Chrome Leather

6213.00 High quality chrome tanned leather for large pneumatics and tremolos. Cowhide. Weight 1.75 - 2 oz. 16 to 30 sq. ft. per hide. Thickness .030" - .040".

Swellshade Pneumatic

6215.00 Very soft and tough, this heavy leather is suitable for large pneumatics. Cowhide. 18 to 22 sq. ft. per hide. Thickness .055" - .070".

Alum Valve

6220.00 White, alum-tanned leather with flesh side buffed for valves and pallets. Sheepskin. 6 to 9 sq. ft. per hide. Thickness .035" - .055".

Alum Gusset

- 6225.00** Soft, pliable white leather tanned for corners of reservoirs. Sheep Skin. 8 to 10 sq. ft. per hide. Thickness .055" - .065".
-

Kangaroo Gusset

- 6225.10** Soft, pliable pearl leather for reservoir corners. Subject to available supply. 3 to 5 sq. ft. per hide. Thickness .020" - .030".
-

Alum Gusset, Cow

- 6225.20** Soft, pliable white leather tanned for corners of reservoirs. Cowhide. 11 to 27 sq. ft. per hide. Thickness .030" - .045".
-

Alum Bellows

- 6230.00** White, stretched leather tanned for reservoir ribs. Cowhide. 18 to 25 sq. ft. per hide. Thickness .040" - .050".
-

Packing Leather

Double buffed, uniformly thick. For chest gaskets and large wood pipe stoppers. Cowhide.

- 6240.00** Thickness .065" - .080", 8 to 14 sq. ft. per hide.

- 6241.00** Thickness .040" - .050", 10 to 14 sq. ft. per hide.
-

Membrane

- 6250.00** Animal intestinal membrane (Zephyr) is light, strong, and flexible. For small pneumatics and pouches. Approximate skin size 8" x 16". Thickness .003".

Silicone Leather Conditioner

- 6260.00** Silicone solution improves flexibility and extends life of leather when exposed to alkalis, acids, salts, and chemicals. Water absorption is reduced, breathing characteristic of leather is unimpaired. Silicone solution is brushed on leather or fabric after material is glued in place. (Cannot be applied to leather before gluing.)
-

Rubber Cloth

Rubber cloth is available in various laminations of one or more layers of high quality cotton or synthetic fabric bonded to an extruded natural or synthetic rubber membrane. Single coated rubber cloth has one fabric sheet bonded to one layer of rubber. Double textured rubber cloth has the rubber membrane sandwiched between two layers of fabric. Fabric color may vary from description.

- 6300.99** Rubber Cloth Sample Card

- 6310.00** Single coated black rubber on white cloth, very thin. For small pneumatics. .012" thick, 44" w.

- 6315.00** Double textured cloth with rubber center. For medium pneumatics and small motors. .017" thick, 54" w.

- 6320.00** Double textured black drill cloth with rubber center and cloth back. For swimmers, reed organ and player piano pump bellows. .030" thick, 57" w.

- 6330.00** Double textured black drill cloth with rubber center and fleece backed. For reservoirs and blower bags. .050" thick, 62" w.

- 6340.00** Single coated black rubber on 20 oz. heavy cloth back. For large reed organ reservoirs. .023" thick, 63" w.

Fibre Washers

	O.D.	I.D.	Thickness
6400.07	1/2"	1/16"	1/16"
6400.08	5/8"	1/16"	1/16"
6400.09	5/8"	1/8"	1/16"
6400.10	3/4"	1/16"	1/16"
6400.11	3/4"	1/8"	1/16"
6400.32	13/16"	1/16"	1/16"
6400.12	7/8"	1/16"	1/16"
6400.13	7/8"	1/8"	1/16"
6400.33	15/16"	1/16"	1/16"
6400.14	1"	1/16"	1/16"
6400.15	1"	1/8"	1/16"
6400.16	1-1/8"	1/16"	3/32"
6400.17	1-1/8"	1/8"	3/32"
6400.18	1-1/4"	1/16"	3/32"
6400.19	1-1/4"	1/8"	3/32"
6400.20	1-3/8"	1/16"	3/32"
6400.21	1-3/8"	1/8"	3/32"
6400.22	1-1/2"	1/16"	3/32"
6400.23	1-1/2"	1/8"	3/32"
6400.24	1-5/8"	1/8"	3/32"
6400.25	1-3/4"	1/8"	3/32"
6400.27	2"	1/8"	3/32"
6400.28	2-1/4"	1/8"	1/8"
6400.29	2-1/2"	1/8"	1/8"
6400.30	2-3/4"	1/8"	1/8"
6400.31	3"	1/8"	1/8"



	O.D.	I.D.	Thickness
6401.08	5/8"	1/4"	1/16"
6401.09	5/8"	5/16"	3/32"
6401.10	3/4"	5/16"	3/32"
6401.12	7/8"	5/16"	3/32"
6401.14	1"	5/16"	3/32"

**Leather Nuts**

No. 50 hole fits No. 13 B & S threaded wire. Available in packages of 100 or 1000.

	O.D.	Head
6410.03	1/4"	Round
6410.04	5/16"	Round
6410.05	3/8"	Round
6410.06	7/16"	Round
6410.07	1/2"	Round
6411.07	1/2"	Flat
6411.08	5/8"	Flat
6411.10	3/4"	Flat
6411.14	1"	Flat

**Leather Nuts — No Hole**

Without center hole, for small wires. Useful for restoration work. Available in packages of 100 or 1000.

	O.D.	Head
6420.03	1/4"	Round
6420.04	5/16"	Round
6420.05	3/8"	Round



Plastic Hex Nuts

These low profile black nuts are intended for use with #13 B & S gauge (.072" Ø) wires with rolled threads. A spherical radius on one side permit valves to gimbel for better seating. The nuts are easily installed with standard hex wrenches or nut drivers. The natural memory of the molded Acetal composition allows easy installation with a firm grip on the wire.



	Diameter	Height
6422.02	3/16"	1/8"
6422.03	1/4"	1/8"
6422.04	5/16"	1/8"
6422.05	3/8"	3/16"
6422.06	7/16"	3/16"
6422.07	1/2"	3/16"
6422.08	5/8"	3/16"
6421.10	3/4"	3/32" Flat
6421.14	1"	3/32" Flat

Felt & Leather

Select white wool felt and valve leather, laminated with flexible adhesive, for valves and pallets. Sold by the square foot.

	Weight	Nominal Thickness
6500.01	Extra Thin	5/32"
6500.02	Thin	3/16"
6500.03	Medium	7/32"
6500.04	Heavy	5/16"

Polyester Felt & Leather

Polyester felt and valve leather bonded with flexible adhesive, for valves and pallets. Sold by the square foot.

	Weight	Nominal Thickness
6510.01	Extra Thin	3/32"
6510.02	Thin	1/8"
6510.03	Medium	7/32"
6510.04	Heavy	1/4"

Pouch Leather

Pre-cut fine grained tan Havana pneumatic leather. Other selected leathers available. Custom pouch leather per instructions.

	Leather Size		Pouch Hole Size
	Round	Square	
6600.25	1-3/4"		1"
6600.27	2"		1-1/4" - 1-3/8"
6600.28	2-1/4"		1-1/2" - 1-5/8"
6600.29	2-1/2"		1-3/4" - 1-7/8"
6600.30	2-3/4"		2"
6600.31	3"		2-1/4"
6600.32	3-1/4"	3-1/4"	2-1/4"
6600.33	3-1/2"	3-1/2"	2-1/2"
6600.34	3-3/4"	3-3/4"	2-3/4"
6600.35	4"	4"	3"
6600.36		4-1/2"	3-1/2"
6600.37		5"	4"
6600.38		5-1/2"	4-1/2"
6601.00	Special Size		

Felt & Leather Valves

Select white wool felt and valve leather punched to size. Special thickness to specification. Polyester felt and center holes optional.

	O.D.	Standard Thickness
6700.07	1/2"	5/32"
6700.08	5/8"	5/32"
6700.10	3/4"	5/32"
6700.12	7/8"	5/32"
6700.14	1"	5/32"
6700.16	1-1/8"	5/32"
6700.18	1-1/4"	5/32"
6700.20	1-3/8"	5/32"
6700.22	1-1/2"	7/32"
6700.24	1-5/8"	7/32"
6700.25	1-3/4"	7/32"
6700.26	1-7/8"	7/32"
6700.27	2"	7/32"
6700.28	2-1/4"	7/32"
6700.29	2-1/2"	7/32"
6700.30	2-3/4"	7/32"
6700.31	3"	7/32"
6701.00	Special Size	



Reisner Valves

	O.D.	Standard Thickness
6702.06	1/2"	7/32"
6702.08	5/8"	7/32"
6702.10	3/4"	7/32"
6702.12	7/8"	7/32"
6702.14	1"	7/32"
6702.16	1-1/8"	7/32"
6702.18	1-1/4"	7/32"
6702.22	1-1/2"	7/32"

Fibre, Felt & Leather Valves

Wool felt and leather valves bonded to fibre washers. Center holes bored 1/2" Ø to 1-1/2" Ø unless otherwise specified. Sizes 1-5/8" Ø up, center holes provided per instructions.

	O.D.	I.D.	Standard Thickness
6800.07	1/2"	1/8"	5/32"
6800.08	5/8"	1/8"	5/32"
6800.10	3/4"	1/8"	5/32"
6800.12	7/8"	1/8"	5/32"
6800.14	1"	1/8"	5/32"
6800.16	1-1/8"	1/8"	15/64"
6800.18	1-1/4"	1/8"	15/64"
6800.20	1-3/8"	1/8"	15/64"
6800.22	1-1/2"	1/8"	15/64"
6800.24	1-5/8"		15/64"
6800.25	1-3/4"		15/64"
6800.26	1-7/8"		15/64"
6800.27	2"		15/64"
6800.28	2-1/4"		5/16"
6800.29	2-1/2"		5/16"
6800.30	2-3/4"		5/16"
6800.31	3"		5/16"
6801.00	Special Size		

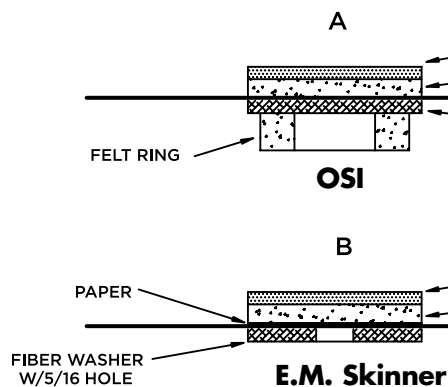


Pouch Leather with Valve

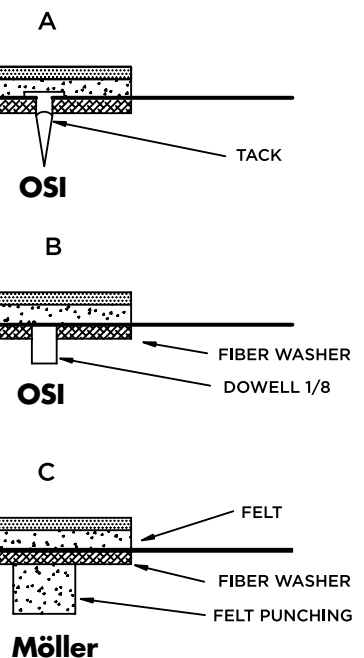
Pouch leathers complete, ready to install are for new or replacement work. Pouch leather has felt and leather valve glued on smooth side and fibre disc glued on flesh side. Leather valve can be furnished with the smooth side out in the Möller style. Style No. 1 spring guide is a felt washer glued to fibre. Style No. 2 spring guide can be furnished as a tack or a dowel, and as a felt punching for Möller pouches. Custom pouches furnished per sample.

Style No. 1	Style No. 2	Valve	Leather Size		Pouch Hole Size
			Round	Square	
6900.07	6950.07	1/2"	1-3/4"		1-1/4"
6900.08	6950.08	5/8"	2"		1-1/4"
6900.10	6950.10	3/4"	2-1/4"		1-1/2"
6900.12	6950.12	7/8"	2-1/2"		1-3/4"
6900.14	6950.14	1"	2-3/4"		2"
6900.16	6950.16	1-1/8"	3"		2-1/4"
6900.17	6950.17	1-1/8"		3-1/4"	2-1/4"
6900.18	6950.18	1-1/4"	3"		2-1/4"
6900.19	6950.19	1-1/4"	3-1/2"	3-1/2"	2-1/2"
6900.22	6950.22	1-1/2"	3-3/4"	3-3/4"	2-3/4"
6900.25	6950.25	1-3/4"	4"	4"	3"
6900.27	6950.27	2"		4-1/4"	3-1/4"
6900.28	6950.28	2-1/4"		4-1/2"	3-1/2"
6900.29	6950.29	2-1/2"		5"	4"
6900.30	6950.30	2-1/2"		5-1/4"	4-1/4"
6900.31	6950.31	3"		6"	5"
6901.00	6951.00	Special Size			

STYLE NO. 1



STYLE NO. 2



Primary Pneumatics

Primary pneumatics are covered in first quality thin tan pneumatic leather. The leather is silicone treated for longer life. The wood blocks are 1/4" thick. One side is drilled with a No. 50 Ø hole for a standard 13 ga. valve wire. The other face has a 3/8" Ø hole and has a leather gasket on the gluing face.

	Size	Open O.A.	Use
6975.14	3/4" x 1-1/2"	1"	Primary
6975.24	1" x 1-1/2"	1"	Primary
6975.25	1" x 1-3/4"	1"	Primary
6975.34	1-1/4" x 1-1/2"	1"	Primary
6975.45	1-1/2" x 1-3/4"	1"	Primary
6975.55	1-3/4" x 1-3/4"	1"	Stop action
6975.58	1-3/4" x 2-1/2"	1"	Stop action

